

PART OF THE EAST 1/2 OF SEC. 31, T.7N. R.1W., S.L.B. & M.
PARADISE RANCH SUBDIVISION, PHASE 1

IN HARRISVILLE CITY

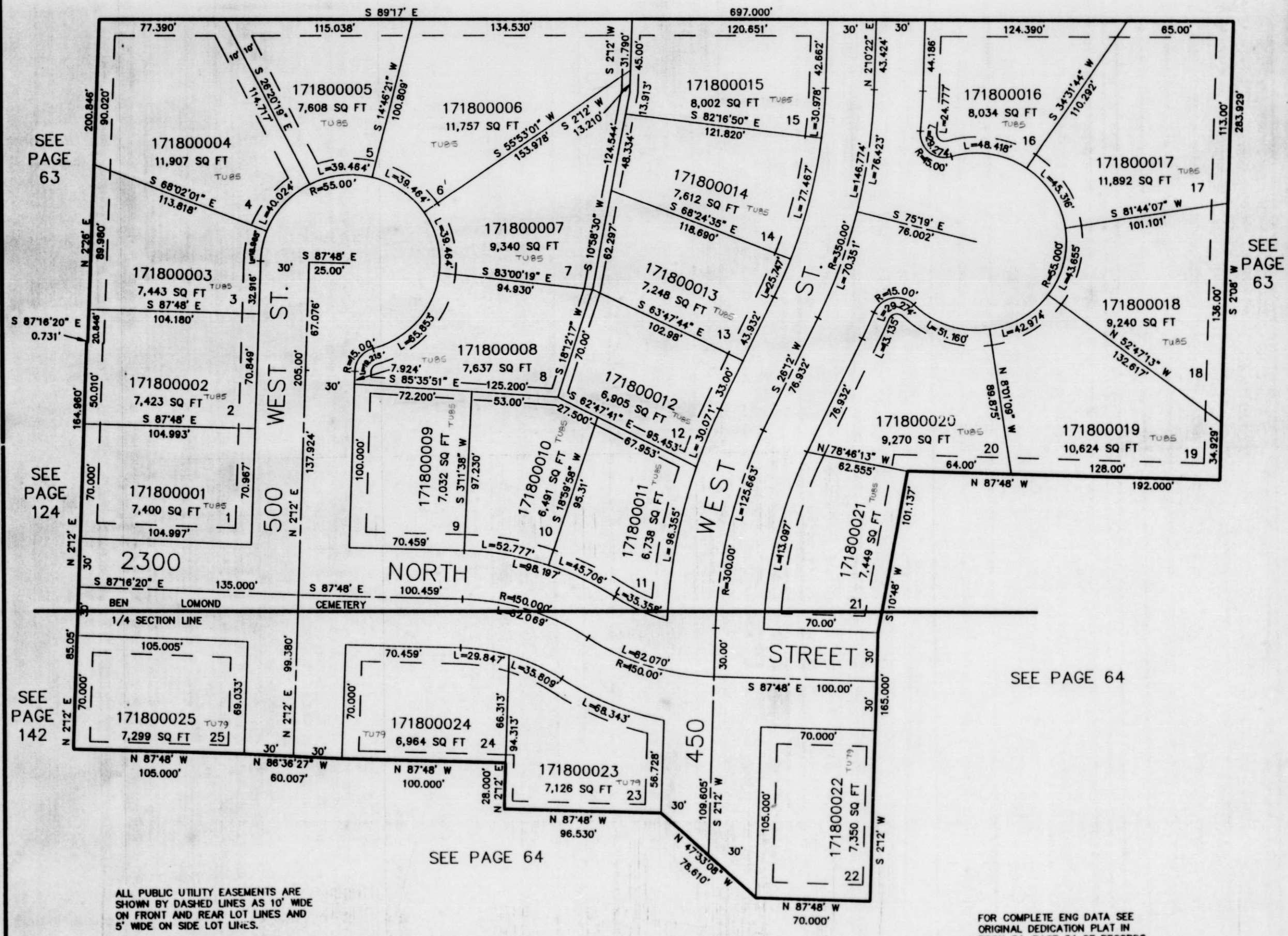
TAXING UNIT: 79, 85

SCALE 1" = 50'

UNLESS OTHERWISE SHOWN
ALL LOTS OWNED BY:
JED J. MOCCENICK

SEE PAGE 63

SEE PAGE 164



SEE PAGE 63

SEE PAGE 124

SEE PAGE 142

SEE PAGE 63

SEE PAGE 64

SEE PAGE 64

ALL PUBLIC UTILITY EASEMENTS ARE SHOWN BY DASHED LINES AS 10' WIDE ON FRONT AND REAR LOT LINES AND 5' WIDE ON SIDE LOT LINES.

FOR COMPLETE ENG DATA SEE ORIGINAL DEDICATION PLAT IN BOOK 34, PAGE 34 OF RECORDS.